

# ShapeGrabber

Industrial 3D Inspection

Don't put your part in the CMM queue, ShapeGrab it!



ShapeGrabber® AI600

## 3D Plastics Inspection

ShapeGrabber Incorporated designs, manufactures and markets automated 3D inspection systems for industrial applications, and has been doing so for a decade. The ShapeGrabber product family brings speed, accuracy and full part coverage to computer-aided-inspection.

ShapeGrabber systems are the ideal tool for rapid inspection of complex shaped parts such as plastic injection molded components. Unlike traditional methods that rely on the inspection of a few points, the non-contact ShapeGrabber technology captures hundreds of thousands of accurate data-points that represent the true surface geometry of the complete part and compares the results to CAD.

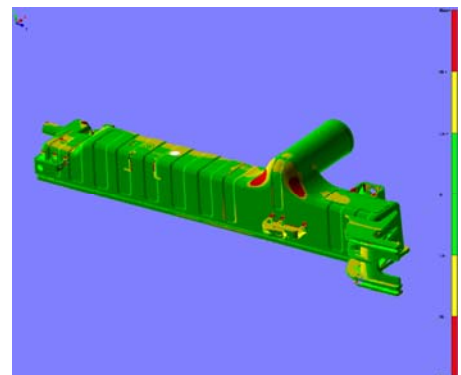
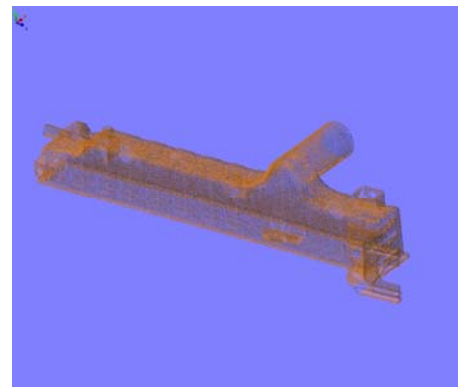
The result is that designers get accurate and timely feedback on prototypes and production staff can make rapid pass/fail decisions with confidence.

## Features

- Full 3D quality control (edges and surfaces)
- Automated inspection in minutes (not hours), with GD&T reports
- Complete design verification
- Easy to use, no programming or CAD training required
- Go/No Go capability: back to production quickly
- Digital inspection reports and data which can be saved and shared

## Benefits

- Reduce inspection time by up to 95%
- Improve production efficiency
- Reduce equipment downtime
- Reduce material waste
- Reduce human inspection error
- Increase customer retention by shipping fewer defects
- Increase customer satisfaction by providing proof that specs are met



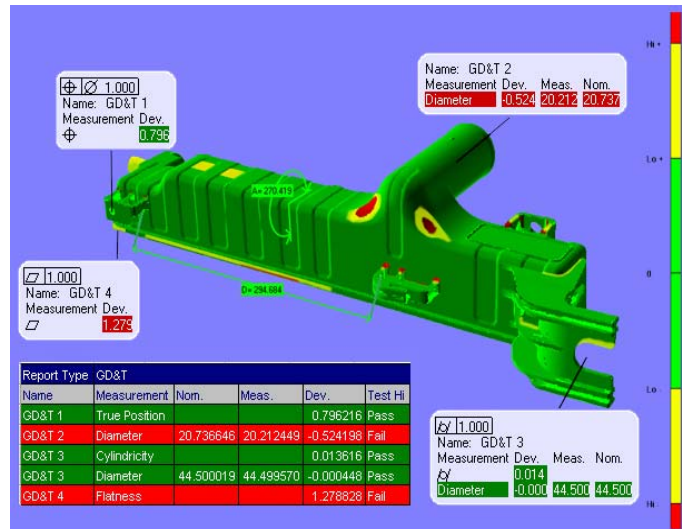
# ShapeGrabber

Industrial 3D Inspection

The inspection software allows you to measure full part geometry quickly and easily.

ShapeGrabber® will make short work of measuring:

- Full surface inspection (shape)
- Bow, warpage, shrinkage
- Wall thickness
- Cross-sections
- Holes (size, center to center, true position)
- Angles
- Diameters & Radii
- Flush & Gap
- And more...



A Report Wizard will help guide the user through the automatic creation of an ISO layout report. Different reporting types are available to the end-user, such as color error maps, GD & T, sections, and tabular. Formats supported include Excel, Word, HTML, pdf.

## Specs Overview

Data acquisition rate: 15,000 to over 100,000 points per second

Accuracy: From +/- 0.002" (0.050 mm) @ 2 sigma, depending on system configuration and part

Scan volume: Up to 28 inches X 28 inches X 48 inches (depending on system configuration).

Laser: Class II, eye safe

Systems are available in various configurations to accommodate different part sizes, automation and quality control requirements. For more information, browse our web site [www.shapegrabber.com](http://www.shapegrabber.com) and contact your local ShapeGrabber reseller.

ShapeGrabber Inc,  
1900 City Park Dr,  
Suite 304,  
Ottawa, ON, Canada

Tel:  
+1-613-247-1707  
Fax:  
+1-613-247-1406

Email:  
sales@shapegrabber.co  
m